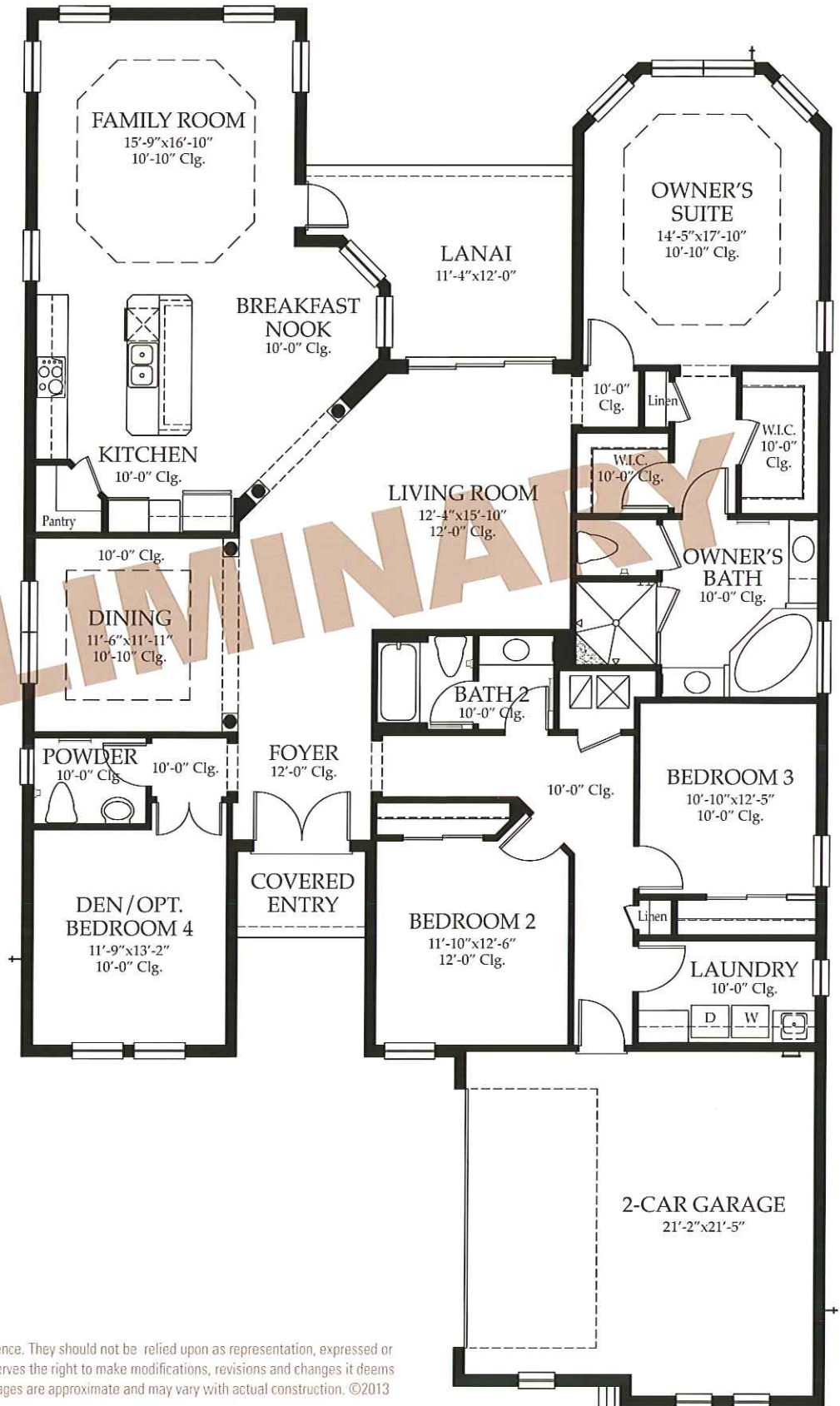


Osprey Lake Preliminary

HIBISCUS

Living Area	2731
Entry	43
2-Car Garage	492
Lanai	164
<hr/>	
Total Sq. Ft.	3,430



HERON BAY™
A WCI Community

These drawings are conceptual only and are for the convenience of reference. They should not be relied upon as representation, expressed or implied, of the final detail of the residences. The developer expressly reserves the right to make modifications, revisions and changes it deems desirable in its sole and absolute discretion. Dimensions and square footages are approximate and may vary with actual construction. ©2013 WCI Communities, Inc. All rights reserved. CGC031523